



Little Aston

Shenstone

Stonnall

Parish Council News

25C Main Street, Shenstone WS14 0LZ
Tel: 01543 481 947
www.shenstone-staffs.gov.uk
e-mail: admin@shenstone-staffs.gov.uk



Winter 2025

ALL THE NEWS FROM YOUR PARISH COUNCIL

New Planters in Stonnall

A big thank you to our Lengthsmen Nigel & Gerry for replacing the planter and plants at the Lazy Hill bus stop. The old planter had badly degraded.

Nigel also replaced the collapsing wooden half barrel planters at the village gateway on Church Road with new barrels and plants.

Helping to make our village look welcoming.



Parish Clerk Takes Early Retirement

After eight years, our Parish Clerk Shirley has decided that the time is right to take early retirement. After many years of juggling work with increasing carer responsibilities she now wishes to prioritise that area of her life as well as have some time to herself. She leaves just before Christmas. Shirley has made an outstanding contribution to all aspects of life in all three Shenstone parish council villages. Young and old have greatly benefited from her care and kindness. Thank you, Shirley.

A new Clerk will be taking over following interview selection to start in early January.

New planter Fotherley

A new wooden planter with new and old shrubs planted. The new planter has been lifted slightly with a brick base to help to keep the bottom off the grass so that it does not rot.



and when not planting they are painting...

During the dry weather the Lengthsmen have been able to repaint many of the benches around the Parish including this famous seat on the Lammas Land and the railway sleeper benches in St John the Baptist Churchyard.



Postie Pays Tribute

Another wonderful commemorative post box topper in Shenstone for Remembrance Sunday.



Friends of Shenstone Station 1884



After a year of planning and preparation Friends of Shenstone Station 1884 installed their hub-cap community art installation on Platform 1 at Shenstone Station. Our lead adopter, Jane Arnstein, worked very closely with Bob Webb (from the Shenstone Repair Café). Bob became involved with the project at its launch evening in November 2024, along with many other groups and individuals. Over 35 hub caps were washed and sprayed ready to be painted by nearly 30 individuals and groups across Shenstone and Lichfield. The completed hub-caps were then varnished to protect them against the elements. You may have seen them displayed in the Community Library for some months over the summer. Bob created heads, tails and fins, from plywood that he cut and primed. Jane then sprayed, painted and varnished them ready to be installed in late September. Together Bob and Jane installed the shoal of fish.



Our next project is to create river of poppies made from tin-cans in the library. Our annual Christmas Tree Festival will be up and running throughout December. Please contact Jane if you'd like to be involved. In the new year the group is hoping to create a community garden, in the meantime Friends of Shenstone Station 1884 continue to plant the planters and keep the station clean, safe and beautiful for our community.

The station is now staffed from 07:00 to 10:00 every day except Sunday by WMT Customer Service person, Louise. Perhaps pop in and say "hello".

Last November Sue Whitmore messaged Jane regarding a beautiful watercolour painting her father, Brian, had created in the 1980's, of the station. The painting will be hung in the waiting room/ticket office as soon as all the necessary permissions are granted. It really is beautiful, another reason to pop into the ticket office!

Stonnall and Lynn Playing Fields Association – A Community Legacy

Did You Know?

Unlike most local authority-run parks, the Stonnall and Lynn Playing Fields are a unique community asset. They were generously gifted to the village in the 1970s by the Burton family, under a legal agreement that defines how the Association must be structured and operated. This means the fields are managed by local volunteers—not the council—and belong to all of us.



Our History

Over the years, the Playing Fields have hosted a wide range of village activities, including:

- Jubilee celebrations and other community events
- The popular “Stonnallbury” festival
- Local football matches

Current Use

Today, the fields continue to serve as a vital space for:

- Occasional football and we are looking to attract Junior Teams in the future
- General outdoor exercise and recreation
- Dog walking
- Children’s play

Who We Are

The Stonnall and Lynn Playing Fields Association is made up entirely of volunteers from the village. Our responsibilities include:

- Day-to-day management of the Playing Fields in line with Association rules
- Financial oversight (funding is thankfully provided by Shenstone Parish Council, acting as Custodian Trustees)
- Organising regular meetings—open to the public
- Maintenance and upkeep of the grounds

We’re always looking for new volunteers! Whether you have manual skills, trade expertise, or simply want to help out, your contribution would be greatly appreciated.

Looking Ahead

We’re committed to improving and preserving this valuable community space. Our future plans include:

- Continue to enhance the general area, especially the children’s play zone
- Collaborating with neighbouring landowners to improve hedgerows, fencing, borders, and biodiversity
- Addressing the serious issue of flooding across the Playing Fields, particularly towards St Peter’s Close

Get Involved

Your ideas, feedback, and support welcomed. This is your space—let’s shape its future together.

For any enquiries or to hire the Playing Fields, please contact us via Facebook or reach out to Linda Waters on 07708 100860 or Councillor Phil Whitehouse on 07887 372982.

STONNALL NEIGHBOURHOOD PLAN – PUBLIC UPDATE

Over the past two years, a large group of Stonnall Residents have worked together with our local Councillors and a Specialist Consultant, authorised by The Parish Council, to refresh Stonnall’s current Neighbourhood Plan. This was originally adopted in April 2016 following a Village Referendum.

All information on the current 2016 plan and the planned revision is available by searching ‘Stonnall Neighbourhood Plan’ on Lichfield District Council’s website.

The Parish Council is pleased to advise that the revision to the current plan has now been reviewed by an Independent Examiner appointed by Lichfield District Council.

He has recommended that subject to slight modifications the plan now proceed to being legally adopted and officially put into force after passing his examination. Once “made,” the plan becomes a part of the statutory development plan, which Lichfield District Council must use when making planning decisions and determining planning applications in the Stonnall area.

This means it will be a community-led document that relates to the use and development of land and associated social, economic and environmental matters.

It helps guide the future development and protects the heritage of the Stonnall area, outlining transport issues, where new housing, shops, and offices should go, what they should look like, and what green spaces should be protected or created.

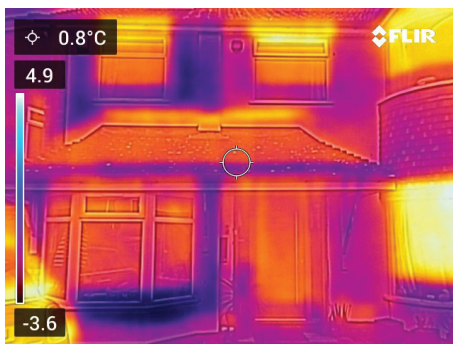
This statutory status gives Neighbourhood Plans far more weight than some other local planning documents, such as parish plans, community plans and village design statements.

The Parish Council would like to thank all residents and the Steering Group team at Stonnall for their hard work and dedication in getting the plan to this final stage.

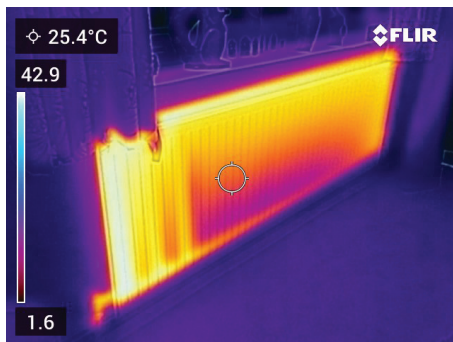




Is your Home Leaking Heat and Pushing up your Energy Bills?



Example of heat loss from the exterior of a building.



Example of an interior thermal image showing the inefficiency of a radiator due to silting up.

Shenstone Environment Group has a thermal camera which we will again be loaning out to anyone from across the Parish interested in exploring whether or not their home has a heating issue. What you find may help you improve your energy use and thus save you money!!

The camera uses infra-red radiation to take images which, instead of giving a lifelike photograph, provides a "temperature map". You can obtain external and internal images which can be used to help identify points of heating loss or inefficiency. Once a problem has been identified remedial action can then be taken which will result in improvements in comfort, financial savings, and a reduction in the building's carbon footprint.

To obtain sensible heat loss images of the exterior of a building, a temperature difference of around 10°C between the inside and outside is necessary. This is why we only offer the loan scheme during winter months.

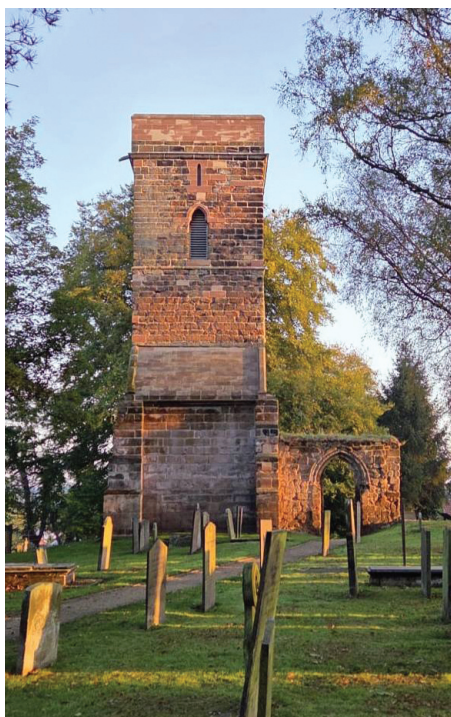
Internal thermal images could help identify problems with such things as insulation, draughts, damp, or clogged radiators and underfloor heating. Often when an issue is found there are simple solutions which you can implement yourselves, however, more complex ones may require professional help.

The camera will only be available once a borrower has received instruction in its operation. This is not because it is particularly complicated, but to help you in understanding and interpreting the images you obtain. This year training sessions will be held at 6.30pm in the library on Wednesday 26th November, then on Wednesday 7th January and Thursday 5th February 2026.

The thermal camera is loaned out from library, normally on a weekly basis - Saturday to Friday. There is no charge, but a borrower must hold a current Staffordshire County Council Library Card.

If you would like to borrow the camera you can register your interest either at the library desk or by Emailing pete.hedges@btinternet.com. We will then contact you to arrange a convenient training session.

Shenstone Old Church Tower



Shenstone's Old Church Tower will once again become a focal point for the village Christmas celebrations.

Lights will beam on to the historic building throughout the festive period and into the New Year.

Visitors continue to attend the open days with the last of the year taking place on Saturday December 6th.

Since its restoration the Tower has attracted more than 3,000 people, offering the chance to explore village history and spectacular views.

Good bye and Good Luck

Wishing all the very best to our junior Lengthsman Gerry who is leaving us in December.

Through all weathers residents will have seen Gerry litter picking, hedge cutting, putting up poppies and Christmas lights as well as many other tasks all over the Parish. He has been a fantastic member of the team and a credit to the Community.

The Council is very rightly proud of our Lengthsman scheme and luckily, we can still rely on our senior Lengthsman Nigel.

Communications

If you would like to receive this newsletter and any other updates from the Council by email then please let the Parish Office know and we will add your contact details to our database.

This is never used for any other purposes or shared with any other organisation.

Shenstone Village Hall donates

Shenstone Village Hall has recently purchased a new defibrillator. The one they had previously is still in good order, so they have kindly donated it to Shenstone Hall.



Former Councillor Val Neale Receives Honour

Val Neale collected her well-deserved British Empire Medal in October 2025 for "hands-on" service to the local community through long-term charitable and voluntary activity.

Awarded for meritorious civil or military service, it was first introduced in 1917 and revived in 2012 for the Queen's Diamond Jubilee.

It is hard to think there could ever be a more deserving person than Val to receive this prestigious award, given to only 300 people in the UK each year.

Val's contribution to Stonnall for over 40 years has been immense and indeed remarkable.

When she was much younger, in addition to her full time role as a school teacher, she volunteered to teach music and also after school netball and other enjoyable activities for younger people including setting up of Youth Club in The Stonnall Youth and Community Centre where Val has been a Trustee for over 30 years.

It is out of these activities that many of the village organisations were started with Val as a founding member and many are still thriving today and she attends most meetings and events.



She was responsible for setting up Stonnall's Christmas Pageant and narrating the Christmas Story in her own unique style.

In 1976 she helped set up and appeared in productions of Stonnall Players, an amateur dramatics group that entertained the Village for many years.

Before Social Media and emails, Val wrote the weekly Stonnall news page that appeared in the Lichfield Mercury to keep the village up to date with events and important matters, until the paper went out of production.

Val's main passions are the church and music to which she has devoted much of her time as a member of St Peter's Church since the 1970's and also a member of the Parochial Church Council from 1980 to 1997. At this time she set up Stonnall Singers which is still thriving today and also played an active role in Stonnall Conservation Society as well as many other groups such as Stonnall Campaign About Roads where she was a founding member.

She is a devoted Christian and as a member of the Pastoral Committee visited sick people and those in need of help, in fact to this day if people need any assistance, Val is normally on the scene generously giving her time and support of people.

Until two years ago, Val was an active Parish Councillor representing Stonnall residents and was instrumental in raising money to restore the ancient Sheep Pound to its current high standards and has also obtained considerable Parish support for Stonnall residents.

The Wednesday morning Coffee Club was started by Val over 25 years ago and she is actively still involved in this accommodating circa 40 village residents each week in a warm and caring environment.

The list of organisations and people that Val has helped in one way or another over the years is endless and long may it continue.

On top of all of these remarkable achievements, she is everyone's friend, always smiling and good humoured and willing to help others for no reward except the satisfaction of knowing she is acting in a Christian way to all folk.

Stonnall is a far better place because all that Val has done and indeed still doing for the Community for which I am sure everyone would say "thank you Aunty Val"

SCAR Autumn 2025 update

Stonnall Campaign About Roads had a very successful Cheese & Wine event held in Stonnall Village Hall on October 24th with over 85 people in attendance. A great social evening, thanks to our suppliers Maxine of Harris Cheese & Eggs on the Chester Road & wine from Jas & Kuldip at The Premier Shop in Main Street Stonnall. We were also blessed with excellent raffle prizes from this year's sponsors JPE Holdings Ltd, Just Hair, Pollys Café, Adrian Floyd, Maxine Wakefield & 1st Stonnall Scouts. Funds raised at the event will cover SCAR's running costs for the next 2 years. A huge



thank you to all that came to support us and the SCAR C&W Task Force for their hard work organising the event.

We also have some serious work to be getting on with too. We are actively involved in the Community Speed Watch group for Stonnall and its 13 volunteers are doing 2 sessions per month in areas in Stonnall that have been identified as having issues with speeding traffic.

We are constantly lobbying Walsall Council about safe solutions for the Chester Road junctions and we are working with Shenstone Parish Council on the newly formed Traffic Group starting in November 2025.

We are also working with the Road Peace Charity who are reaching out to local MP's to see what can be done to reduce traffic volumes, speeds & to improve junctions in and around Stonnall.

Our next community meeting is at Stonnall Community Centre (The Hut) 19.30 on Wednesday 21st January. Please come along for the latest updates and for an opportunity to tell us your views or email us at scar.stonnall@gmail.com

SHENSTONE FESTIVAL PLANNING BEGINS



Shenstone's bi-annual village festival is starting to take shape for the two-day event on July 4 and 5 2026.

A new look steering group is taking the helm after chairman Keith Jones decided he wanted to take a back seat.

He's been involved for several years taking over as chairman in 2019.

Now he is handing over the baton to Ian Law and Stuart Jones who will co-chair a steering group, with Keith staying to assist with the co-ordination of the open gardens.

'Keith has done so much to keep this wonderful festival alive,' said Ian Law, 'and he deserves a rest.'

While using the same format as previous years, the new steering group of six, are aiming to introduce additions that will help in continuing to attract visitors.

'Shenstone Village Festival has become a major event in the local calendar, and we are hoping to ensure it stays that way for many years to come,' said Stuart Jones.

'Many of the village organisations have already responded extremely positively, as well as garden owners, venues and the two churches.'

The Village Festival will coincide with the centenary of Trinity Methodist Church, which along with St John the Baptist will stage flower shows.

It was in 1923, Methodist services commenced in Shenstone at the Oddfellows Hall.

The land on the corner of New Road was purchased in 1925, with stone laying beginning in January 1926 which will be celebrated with an afternoon tea this coming January.

The Church was opened on Saturday June 1926 with the Wesley Hall being added some 34 years later.

• Would you be willing to open your garden for the festival for either one or two days to add to the attractions of the Festival? Then please contact Keith Jones E: solvac@btinternet.com or Tel: 07947 026696.

Also groups or individuals wishing to be involved should contact either Ian Law Tel: 07973 548785

E: ianlaw19@gmail.com or Stuart Jones Tel: 07541 089990.

Local Government Review

In December 2024 the government announced plans to reorganise all county areas in England, including Staffordshire and Stoke-on-Trent, into unitary councils.

This means that locally Lichfield District Council (LDC) and Staffordshire County Council (SCC) will cease to exist within the next few years and instead be part of a single tier council structure called a unitary council.

Parish Councils are not affected by this proposed change but it is felt they will have more powers and authority to deliver day to day services to the public.

Although Councils have not sought these changes, they cannot ignore them and they must put a proposal to the government by 28th November 2025.

The various Councils in Staffordshire have reached differing views on what shape and size the areas of these unitary councils will cover and each proposal splits up Staffordshire in different ways.

LDC therefore worked with close by neighbouring councils to shape a proposal that reflects residents' views and meets both LDC's guiding principles and the government's criteria for change.

LDC's preferred option was approved by Councillors at a Full Council Meeting followed by a Cabinet decision on Tuesday 4th November 2025.

The proposal will be submitted to the government by 28th November 2025 and feedback to each Council is expected from the Government by the Summer of 2026.

Your local District Councillors can assist if you have any queries and their contact details can be found at the end of this magazine.

For more information on this matter please see Lichfield District Council's website:

<https://www.lichfielddc.gov.uk/council/devolution-local-government-reorganisation>

Map showing the proposal of LDC to group each local Council to form new unitary authorities



Little Aston Neighbourhood Plan - Update on the Re-Run and Next Steps

A huge thank-you to everyone who took part in the public consultation held on 23 October 2025 for the re-run of the Little Aston Neighbourhood Plan.

The event was very well attended, and the Steering Group was delighted with the level of engagement and thoughtful feedback received. Your ideas and comments are helping to shape the updated Plan so that it truly reflects the wishes and priorities of our community.

Over the coming weeks, the Steering Group will carefully review all contributions and begin rewriting the new draft Plan. The goal is to make sure the document remains community-led, forward-looking, and fully aligned with the Lichfield District Local Plan.

Although the re-run timetable runs into 2026, the Steering Group and Parish Council are committed to progressing this work sooner wherever possible, to ensure Little Aston's updated Plan can inform and sit alongside the District Councils evolving Local Plan.

Indicative Re-Run Timetable (subject to acceleration)

Item	Timeline	Commentary
1. Steering Group meetings	Early Oct 2025	Several held and evidence reviewed
2. Public consultation period	23 Oct 2025 to end Nov 2025	Consultation launch event on 23 Oct and email or hand delivered responses still welcome.
3. Submit new revisions to Lichfield District Council (LDC) for informal comment	Dec 2025	Draft shared for LDC feedback
4. Regulation 14 consultation	Jan to Mar 2026	Flyer to each household starts a six-week consultation carried out by Shenstone Parish Council
5. Prepare for Regulation 15 submission	Apr 2026	Final edits and documentation for submission to LDC
6. Regulation 16 consultation	May to Jun 2026	Final six-week formal consultation carried out by LDC
7. Examination	Jul to Aug 26	

Note: Some stages may be brought forward so the Plan keeps pace with the Local Plan review process.

What Happens Next

- All resident comments are being reviewed by theme (Green Belt protection, transport and parking, design and character, community facilities, and more).
 - The revised draft Plan will be published for further feedback, followed by the formal Regulation 14 and 16 consultations.
 - Updates will continue to be shared through the Parish newsletter, the Parish Council website, and local WhatsApp/email groups.
- Thank you once again to everyone who attended the consultation or submitted comments. Your involvement is vital in shaping the future of Little Aston, ensuring it remains a green, distinctive, and thriving place to live.

Laura Towers Steering Group Member
Residents of all Wards

COMMUNICATION UPDATE FOR LITTLE ASTON RESIDENTS

Following issues with communications in Little Aston earlier this year the Parish Council is working hard to increase resources so that deliveries of the newsletter and other important documents reach residents.

You can also register to have communications emailed direct to you by leaving your contact details with us. admin@shenstone-staffs.gov.uk

You can also stay in touch by following our website www.shenstone-staffs.gov.uk which is updated regularly.

Residents associations are also sent important updates.

And finally.....hard copies of the newsletter are left at key drop off points such as Little Aston Village Hall, Pat's Butchers & the Library/Phone Box on Burnett Rd.

Congratulations Shenstone Seniors Club



We are pleased to announce that our monthly Lunch Club has just been awarded a 5 star rating by the Food Standards Agency.



Congratulations to Brenda, Val and all the team

**AT HOME OR AT WORK
DIY OR CONTRACTOR
BE ASBESTOS AWARE**

**BEFORE YOU BEGIN YOUR PROJECT
FIRST GET A SURVEY FROM A
UKAS ACCREDITED EXPERT**

**KEEP YOUR FAMILY, COLLEAGUES
AND NEIGHBOURS SAFE**

visit:
hse.gov.uk/asbestos/

Shenstone Neighbourhood Plan Approved

Following independent examiner approval in August and Lichfield District Council approval in late September the Shenstone Neighbourhood Plan has been successfully updated and extended to 2040.

The revised Neighbourhood Plan will guide future planning development to protect, maintain and enhance the overall quality of the environment and amenity that residents value in Shenstone. The revised Neighbourhood Plan can be found on the Parish Council web site and copies are available from the Parish Council office in Main Street.

The revised Neighbourhood Plan contains provisions to (i) ensure new developments provide a mix of dwelling sizes that

meet local needs (ii) ensure residential infill reflects the surrounding character and protects neighbour amenity (iii) ensure new developments address climate change and are wildlife friendly (iv) supports retrofitting of energy efficiency measures in heritage homes (v) ensures new development addresses surface water flooding and external light pollution (vi) support micro business use of community buildings.

The revised Neighbourhood Plan also contains non development planning initiatives and commitments to (a) explore and develop traffic calming and road safety measures (b) trail and footpath preservation (c) play area and play equipment enhancements (d) community energy provision (e) verge and woodland management (f) enhance air quality. The non planning proposals will need new and existing Shenstone community groups to progress each initiative. In early 2026 the Parish Council will carry out a survey that will ask all Shenstone residents to identify their Neighbourhood Plan non planning priorities.

The Parish Council wishes to thank all residents who participated in shaping the revised Neighbourhood Plan over the last twenty four months and in particular the members of the Neighbourhood Plan Steering Group.

Little Aston Village Hall Additional Room, Toilets, Kitchenette and Access

Unfortunately, the final completion of the project has been much slower than we would have hoped, mostly because of the non-availability of the electrical and plumbing sub-contractors and delivery delays for essential components. However, other than for the final completion and testing of the fire alarm system and for the final connections being made to the air source heat pump, the project is complete.

It has been a long process since the original concepts were discussed within the Management Committee. However, thanks to the Management Committee's careful accumulation of its financial resources and to substantial grants from the Parish Council; the Owen Family Trust; the Platinum Jubilee Village Halls Fund, the Enover Community Trust; Awards for All; the Garfield Weston Foundation; the Community Foundation for Staffordshire and Shropshire; and to a £50,000 loan from ACRE (Action with Communities in Rural England), plus to a lot of perseverance, the new facilities are already in use by some of the users who have been waiting patiently for the work to be completed.

In view of the closeness to Christmas, the Management Committee have decided to delay the official opening ceremony until the spring half term. The official opening will therefore take place on Saturday 21st February 2026, beginning at 11.00. Representatives from all the grant sources will be invited together with everyone from the local community to see what has been achieved, to see the new room in use and to watch as the many different groups who use the Hall showcase their activities.



The New Room and its Kitchenette



The entrance door to the New Room and the new equipment storage areas that are on both sides of the corridor that leads to the Bowling Green

Celebrating Shenstone Community Library

Proud Recipients of The King's Award for Voluntary Service

A Royal Honour for Local Dedication

Shenstone Community Library, tirelessly run by a dedicated team of local volunteers, has been awarded the prestigious King's Award for Voluntary Service. This remarkable accolade is the highest recognition for voluntary groups across the UK and celebrates outstanding work carried out in communities throughout the nation.



The King's Award for Voluntary Service

About the Award

The King's Award for Voluntary Service is the equivalent of an MBE for volunteer groups. It recognises not just the hours invested, but the genuine difference made to people's lives. It is a testament to the passion, commitment, and community spirit shown by everyone involved in running and supporting our library.

Shenstone Community Library's Journey

The library and coffee shop has become a vital community hub for learning and friendship. Operated entirely by volunteers, the library not only provides access to books, a gallery and a very popular coffee shop, but also a variety of events for all ages. The volunteers give their time, skills, and commitment to ensure the library remains a welcoming space for everyone.



What This Means for the community

Receiving the King's Award for Voluntary Service is an extraordinary honour and is a recognition at the highest level for the daily acts of kindness, generosity, and hard work that sustain our library. It is hoped that it will inspire even more people to get involved, whether by volunteering, or simply coming along to enjoy the library's many offerings.

A Message from Our Volunteers

"We are delighted to have our efforts recognised in this way. For us, volunteering is about giving back and helping our community. This award shows what can be achieved when a community pulls together," says Lynda Jones, Chair of the Trustees.

Thank You!

This award belongs to everyone who has supported the library in any way. Thank you for making our community stronger, brighter, and more connected. Do pop in soon - whether for a book, a cuppa, or a chat.

With heartfelt thanks,
The Community Library Volunteers



Full Parish Council Meetings 2026

All meetings start at 7.15pm

Tues January 13th at Shenstone Community Library

Tues February 10th at Little Aston Village Hall

Tues March 10th at Shenstone Community Library

Tues April 14th at Little Aston Village Hall

Tues May 12th at Shenstone Community Library

Tues June 9th at Little Aston Village Hall

Tues July 14th at Shenstone Community Library

Tues September 8th at Little Aston Village Hall

Tues October 13th at Shenstone Community Library

Tues November 10th at Little Aston Village Hall

Tues December 8th at Shenstone Community Library

Finance, Legal, Health & Safety Committee

(All meetings are Tuesdays at 5.30pm at the Parish Office)

February 24th, April 28th, June 23rd, Sept 22nd, Nov 24th.

Neighbourhood Planning & Property Committee

(All meetings are Tuesdays at 5.30pm at the Parish Office)

January 27th, March 24th, May 26th, July 28th, Oct 27th, Dec 15th)

Hedges, Trees, Lights and Footpaths

As all villager walkers will be aware, some of our footpaths within the Parish are extremely narrow and very close to our busy highways.

The very hot summer has given a lot of our gardens shrubs and trees a big growth spurt. This has meant that this year, more than normal, hedges have crept out over the property boundaries and are causing obstructions for pedestrians. It is an ideal time of year to do some garden "housekeeping", whilst the birds are not nesting and the vegetation has stopped growing for the year.

May we ask all residents to check that their hedges and trees do not overhang on to the public footpaths. Where necessary, get them cut back to within your own property boundary, including higher branches. Also, could you ensure those trees and shrubs obscuring the street lighting are cut back to allow good lighting of the paths and highway. Finally, as winter and high winds are upon us, it might be prudent to check the health of any large trees, ensuring their safety for both your own home, neighbours and the general public.

With the early dark nights, pot holes and wet weather, walking on the paths around the villages is not the most pleasant experience at the best of time.

Your help in keeping your own boundaries clear of the footpaths and lights will really be appreciated by your fellow residents.

Lichfield District Council extends LinkUp bus service keeping villages connected

Lichfield District Council is delighted to confirm that the popular LinkUp on-demand bus service will continue running until March 2026, thanks to ongoing support from the UK Shared Prosperity Fund (UKSPF).

Since its launch last December, LinkUp - with its distinctive pink buses - has become a valued travel option for residents in rural areas with limited or no traditional bus services.

The service offers flexible, accessible transport for just £3 per journey, helping people reach shopping centres, workplaces,

medical appointments and community hubs across the district.

By keeping residents connected, LinkUp is helping to support independence, reduce social isolation and make everyday journeys easier for those without access to a car or fixed bus routes.

Councillor Janice Silvester-Hall, Cabinet Member for Economy, Ecology and Climate Change, said: "I'm delighted that we have been able to extend the Link Up bus service well into next year.

"It has been of real benefit to people living in rural communities across Lichfield District who don't have access to a car or public transport.

"The LinkUp bus helps us to continue delivering on our commitment to improve transport links and reduce social isolation."

The extension to March 2026 will allow even more residents to experience the benefits of reliable, responsive transport that adapts to their needs.

For full details on how to book and use the service, visit LinkUp bus service – Your flexible, on-demand bus service for rural villages.

Parish Office Opening Hours

Monday and Friday; the office will remain closed. Tuesday, Wednesday and Thursday afternoons will now also be closed from 1:00pm.

Emails and telephone messages will continue to be monitored and dealt with throughout. If an in-person meeting is required during these closed times, an appointment may be made.

Shenstone Parish Council Members' Contact Details

SHENSTONE WOOD END / SHENSTONE WARD /LITTLE ASTON AND STONNALL WARD

SHENSTONE WOOD END

Councillor David Salter - CHAIR SHENSTONE PARISH COUNCIL

Tel: 0121 308 4421 / mob: 07582 603003 email: david.thompson@shenstone-staffs.gov.uk

SHENSTONE

Councillor David Thompson – CHAIR: NEIGHBOURHOOD PLANNING & PROPERTY COMMITTEE

Tel: 01543 480953 /mob: 07582 603003 email: david.thompson@shenstone-staffs.gov.uk

Councillor Lesley Edgley Tel: 01543 481 861 email: lesley.edgley@shenstone-staffs.gov.uk

CHAIR-FINANCE, LEGAL, HEALTH & SAFETY COMMITTEE

Councillor Simon Fisher VICE CHAIR SHENSTONE PARISH COUNCIL email: simon.fisher@shenstone-staffs.gov.uk

Councillor Christopher Callow email: christopher.callow@shenstone-staffs.gov.uk

Councillor Louise Hawes email: louise.hawes@shenstone-staffs.gov.uk

Councillor Martin McQueen email: martin.mcqueen@shenstone-staffs.gov.uk

STONNALL

Councillor Gail Nicholls Tel: 01543 376 email: gail.nicholls@shenstone-staffs.gov.uk

Councillor Mick Cox Tel: 01543 374 869 / mob: 07968 724222 email: mick.cox@shenstone-staffs.gov.uk

Councillor Phil Whitehouse Tel: 07887 372 982 email: phil.whitehouse@shenstone-staffs.gov.uk

Councillor Dino D'Ambrosio email: dino.dambrosio@shenstone-staffs.gov.uk

Councillor Chris Jones email: chris.jones@shenstone-staffs.gov.uk

Councillor David Smith email: david.smith@shenstone-staffs.gov.uk

LITTLE ASTON

Councillor Stuart Harrison email: stuart.harrison@shenstone-staffs.gov.uk

Councillor Alan Pugh email: alan.pugh@shenstone-staffs.gov.uk

• **Parish Clerk, Shenstone Parish Council, 25C Main Street, SHENSTONE WS14 OLZ**

Tel: 01543 481 947 e-mail: admin@shenstone-staffs.gov.uk

COUNTY COUNCILLOR	ALEX FARRELL	alex.farell @staffordshire.gov.uk
DISTRICT COUNCILLOR		
STONNALL & LITTLE ASTON	JOSEPH POWELL	jjoseph.powell@lichfielddc.gov.uk
DISTRICT COUNCILLOR		
STONNALL & LITTLE ASTON	PHIL WHITEHOUSE	phil.whitehouse@lichfielddc.gov.uk
DISTRICT COUNCILLOR		
SHENSTONE	DAVID SALTER	david.salter@lichfielddc.gov.uk
MEMBER OF PARLIAMENT	SARAH EDWARDS	sarah.edwards.mp@parliament.uk

Community Groups/Organisations

Contact the Parish Council on 01543 481 947 or
e-mail admin@shenstone-staffs.gov.uk

SHENSTONE

St John the Baptist Church.	Rev Jonathan Iddon	01543 480 286
Trinity Methodist Church	Rev Joanna Thornton	01543 253744
Shenstone Day Care (Friday Friends)	Joy Shorey & Yvonne Strub	07932 343 575/07855 156 751
Shenstone Seniors Lunch Club	Brenda/Val	Via Parish Office
Shenstone St John's Hall	Administrator	01543 480 286
Shenstone Village Hall	Tresa Rock	01543 481 504
Shenstone Wesley Hall	Carole Share	01543 480 033
Shenstone Seniors Brunch Club	Mary Jones	01543 481 022
Richard Cooper Room	Tresa Rock	01543 481 504
Scouts Group	Alex Harper	Alexh.home@gmail.com
Women's Evening Institute	Gina Whorton	01543 480 884
Shenstone Lunch Club	Brenda/Val	07793866975/07828862754
Shenstone Baby & Toddler Group	Via Facebook	
Shenstone Tennis Club	Rob Ashley	rob.robashley@gmail.com
Shenstone Community Library	Library reception	01543 480 915
Lammas Land Management Committee	Richard Partridge	01543 481 102
Friends of Shenstone Tower	Stuart Jones	07541 089990
Shenstone Playing Fields Management Committee	David Thompson	shenstoneplayingfields@gmail.com
Shenstone Playing Fields Football Bookings	Sophie Baggott	shenstoneplayingfields@gmail.com
Shenstone Painting Class	Dave Upton	0121 353 5338
Friends of Shenstone Station 1884	Jane Arnstein	Arnstein.jane@gmail.com
Shenstone Quilters	Joy Shorey	01543 481 297
National Women's Register	Lynne Young	01543 480 420
Rainbow Guide Group	Nina Garratley	Nina.garratley@hotmail.co.uk
Footherley Club	Dave Doige	0121 605 1252
Guides	Sarah Hardie	07946 777170
Brownies	Angela Hiney-Bancroft	01543 481610
Shenstone Strollers	Peter Gravestock	01543 897529
Shenstone & Stonnall Mens Group	Jim Pole	01543 480545
Shenstone History Group	Bronwen Ross	01543 328963
Shenstone Reading Group	Community Library	01543 480915
Shenstone Magazine	Graham Birt	01543 483138
Tai Chi	Neil Rankine	01543 480151
Shenstone Against Speeding	Martin McQueen	Via Parish Office

STONNALL

St Peters Church, Stonnall	Rev Jonathan Iddon	07756 752412
	Benefice office	07476 351436
	Kelsey May	stonnallvh@gmail.com
Stonnall Village Hall	Mick Cox	info@stonnall-community-centre.co.uk
Stonnall Community Centre	Pam Ramsell	01543 372 241
Stonnall Gardeners Guild	Val Neale	01543 374 430
Stonnall Coffee Club	Sarah Hardie	07946 777170
Stonnall Brownies & Guides	Marie Jenkins	07977 516 161
Stonnall Scouts/Beavers/Cubs	Phil Whitehouse	Phil.whitehouse@shenstone-staffs.gov.uk
Stonnall Playing Fields Management Committee	Fiona Burgess- secretary	07710 388467
	Dot Horton	01543 374796
Stonnall Stitchers	Lynne Ingram	01543 374 629
The Stonnall Conservation Society	Lynne Ingram	01543 374 629
Stonnall Reading Group	Jill Street	01543 375727
Friends of Shenstone Church	Mick Cox	info@stonnall-community-centre.co.uk
Film Club	Maxine Wakefield	01543 375 108
Stonnall Neighbourhood Watch	Adrian Walters	SCAR.stonnall@gmail.com
SCAR (Stonnall Campaign about Roads)	Debbra Tullah	07787 666 932
Diamond Jubilee Allotments	Bob Share	01543 480 033
Stonnall Singers	Jim Bowker	07724 168881
Stonnall Juniors Football Club	Karen Williams	karen@buddybagfoundation.co.uk
Buddy Bag Foundation	Liz Daly	07837 868913
Mint Theatre Society	Neil Rankine	01543 480151
Tai Chi	Phil Whitehouse	07887 372 982
Shire Oak Quarry Liaison Group	Emma Kilday	07834 666206
KSA Stay & Play – Stonnall Village Hall		

LITTLE ASTON

St Peters Church, Little Aston	David Salter	07956 142215
Little Aston Recreation Ground (LARGA)	Chris Flemming	0753 424 8672
Little Aston Table Tennis Club	Leighsa Wack/Sara Bradbury	07950 047 172
Little Aston Pre School Play Group	Steve Bennett	0121 308 4947
Little Aston Community Association	Elizabeth Paxton	07861 259 982
Little Aston Village Hall	Rod Crowley	0121 353 8238
Little Aston Bowling Club	Pete Sutton	07504 458648
Little Aston Tennis Club	Neil Rankine	01543 480151
Tai Chi	Maura Trowman	Maura.trowman@yahoo.com
Little Aston Evening Women's Institute	Emma Paxton	emmapaxton@live.co.uk
Little Aston Brownies		

USEFUL NUMBERS

Lichfield District Council : 01543 308 000 Staffordshire County Council : 0300 111 8000 Staffordshire Police: ring 101